



FRONTIER Model number: 25CMB32663CH20

3 beds • 2 baths • 2112 sq.ft. • 32' width • 66' depth

Our home building facilities invest in continuous product and process improvements. Plans, dimensions, features, materials, specifications and availability are subject to change without notice or obligation. Renderings and floor plans are representative likenesses of our homes and may differ from the actual homes. We invite you to tour a Home Center near you and inspect the highest value in quality housing available or call (888) 736-3332 to speak with a Home Consultant. Copyright 2017, CMH. All rights reserved.

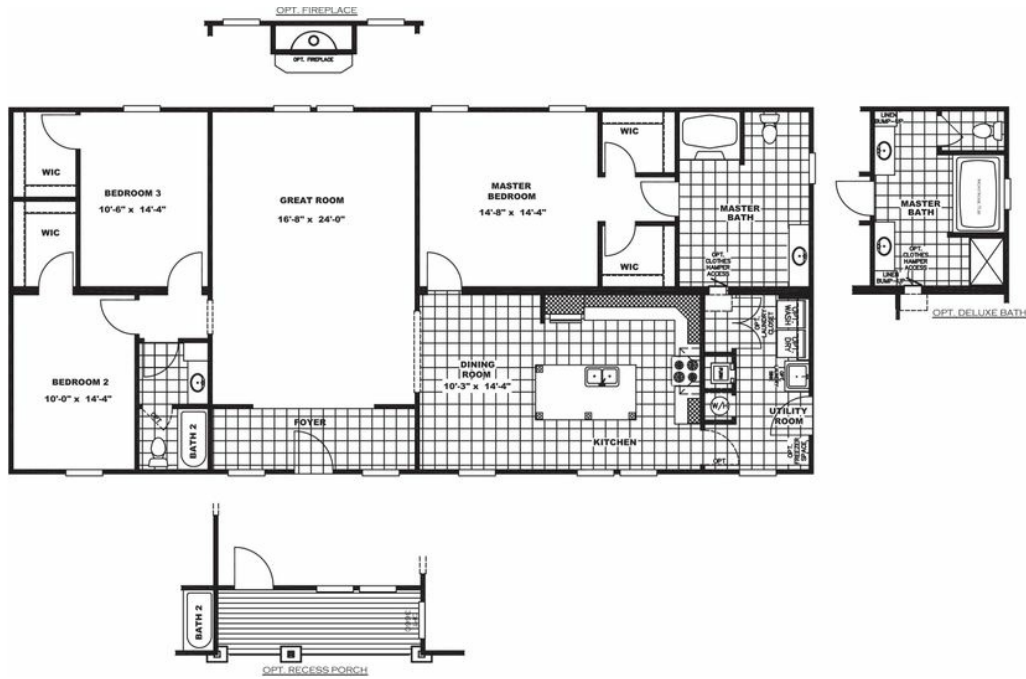
<https://www.claytonbarboursville.com>

**CLAYTON HOMES-
BARBOURSVILLE**

**5898 ROUTE 60 EAST
BARBOURSVILLE, WV 25504**

Monday - Thursday: 9am - 6pm
Friday: 9am - 6pm
Saturday: 9am - 5pm
Sunday: Closed

(888) 736-3332



FRONTIER Model number: 25CMB32663CH20

3 beds • 2 baths • 2112 sq.ft. • 32' width • 66' depth

Our home building facilities invest in continuous product and process improvements. Plans, dimensions, features, materials, specifications and availability are subject to change without notice or obligation. Renderings and floor plans are representative likenesses of our homes and may differ from the actual homes. We invite you to tour a Home Center near you and inspect the highest value in quality housing available or call (888) 736-3332 to speak with a Home Consultant. Copyright 2017, CMH. All rights reserved.

<https://www.claytonbarboursville.com>

**CLAYTON HOMES-
BARBOURSVILLE**

5898 ROUTE 60 EAST
BARBOURSVILLE, WV 25504

Monday - Thursday: 9am - 6pm
Friday: 9am - 6pm
Saturday: 9am - 5pm
Sunday: Closed

(888) 736-3332